

Key Employee Coaching Program

Monthly Summary



LEADERSHIP TRAINING MONTH 2

KE and Julie meet twice for training. Julie trains KE on how to show up as a leader in their role, and how to flow from manager to leader. KE gains clarity and confidence in their leadership skills. CEO can touch base with Julie at any time.



REFLECTION & SKILLS REFINEMENT MONTH 4

KE learns how to be a resilient and resourceful leader, and meets with Julie twice this month. We'll review goals and parameters, as well as refine skills to address leadership mistakes made..



ACHIEVE AND GROW MONTH 6

KE meets with Julie twice to discuss leadership pitfalls, review progress, and assess future. CEO and Julie meet to debrief entire program. CEO and KE meet with Julie to determine program success and additional opportunities for growth.

1

ASSESS & ALIGN - MONTH 1

Julie gets to know the key employee (KE) and business owner (CEO). Through assessments, questionnaires, and meetings, goals are established, expectations are set, and Julie devises a game plan for success.

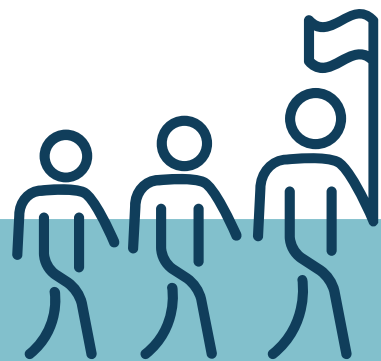


2

3

LEADERSHIP IN PRACTICE MONTH 3

KE now has a chance to practice what they have learned thus far in your business. KE will meet with Julie twice this month. CEO also meets with Julie this month to check-in, assess, and make adjustments as needed.



4

5

SET UP FOR SUCCESS MONTH 5

Julie and CEO meet early in this month to discuss final areas of improvement. KE meets with Julie twice to learn accountability skills, and we review the mission and vision. CEO's confidence grows in KE as a leader.



6

Learn more at thejuliebee.com/key-employee-coaching-program/



Key Employee Coaching Program

Summary of Deliverables by Month



Pricing

Beta-Program Pricing*

- \$2,500 up-front **or** \$425/month for 6 months.
- Includes up to 3 additional hours each month for communication between Julie and KE and/or CEO.

**For first 5-10 programs sold.
Price is planned to double afterwards.*

Learn more at
thejuliebee.com/key-employee-coaching-program/

